


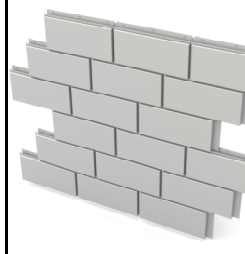
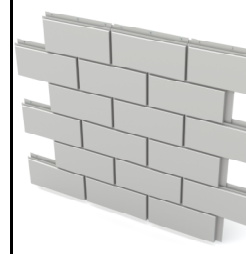

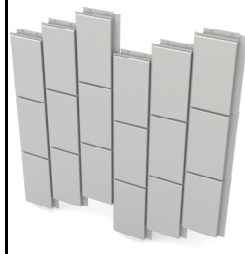
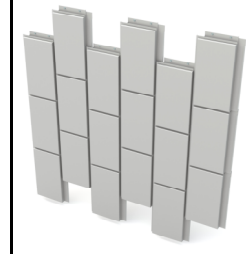
Date:

EN-V - A80 Series Order Form

Color Choices

	EN-V-001	Stone White		EN-V-018	Military Blue
	EN-V-002	Bone White		EN-V-019	Interstate Blue
	EN-V-003	Almond		EN-V-021	Terra Cotta
	EN-V-004	Sandstone		EN-V-022	Colonial Red
	EN-V-005	Sierra Tan		EN-V-023	Burgundy
	EN-V-006	Medium Bronze		EN-V-025	Silver *
	EN-V-007	Dark Bronze		EN-V-026	Copper Wire *
	EN-V-008	Cityscape		EN-V-028	Champagne *
	EN-V-009	Slate Gray		EN-V-030	Weathered Zinc *
	EN-V-010	Musket Gray			
	EN-V-011	Charcoal		* Indicates a Mica paint	
	EN-V-012	Matte Black		Custom Color	
	EN-V-013	Arcadia Green		Color Code	Color Name
	EN-V-014	Hemlock Green			
	EN-V-015	Forest Green		A signed photocopy with color name and code is required	
	EN-V-016	Hartford Green		by Dri-Design before an order can be entered	
	EN-V-017	Berkshire Blue			

Panel Lay-out (choose one)


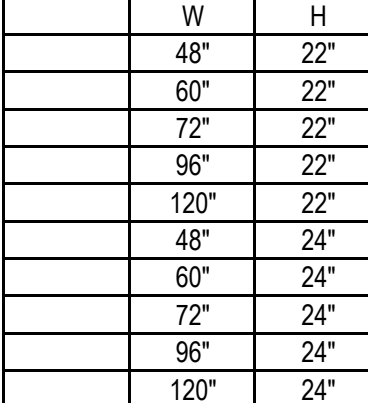
Horizontal Panel Stacked		1/4 Vertical Joint Stagger	
			
Vertical Panel Stacked		1/4 Horizontal Joint Stagger	1/2 Horizontal Joint Stagger
			



12480 Superior Ct., Suite #1
 Holland, MI 49424
 616-355-2970
<https://en-v.com>

Date:

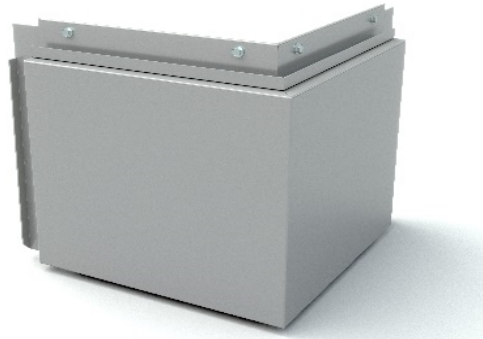
Panel Size / Quantity

	Quantity	Size			Quantity	Size	
		W	H			W	H
		18"	48"			48"	22"
		24"	48"			60"	22"
		30"	30"			72"	22"
		36"	36"			96"	22"
		72"	18"			120"	22"
		96"	18"			48"	24"
		120"	18"			60"	24"
		60"	20"			72"	24"
		72"	20"			96"	24"
		96"	20"			120"	24"
		120"	20"				

NOTE: All dimensions for flat panels are centerline to centerline

EN-V panels have a 1/2" horizontal joint and a 5/8" vertical joint

Corner Panel Size / Quantity

	Quantity	Size		
		W1	W2	H

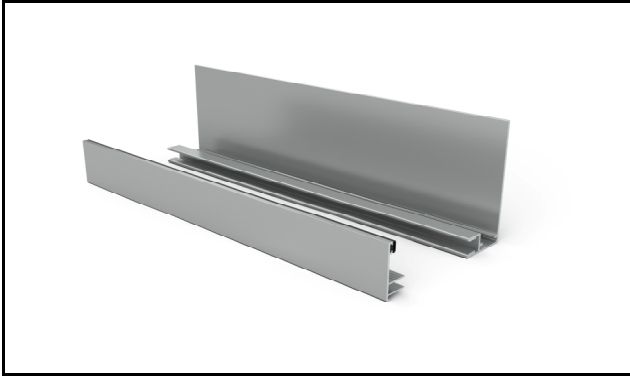
NOTE: All dimensions for corner panel are face dimensions only

Dimensions to be provided in decimal format in 1/16" (.0625") increments

Date:

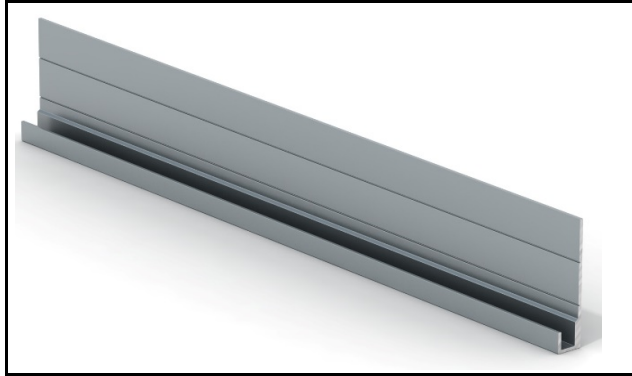
Extrusion / Trims / Flat Sheets & Accessories

Large 2-Piece J Extrusion



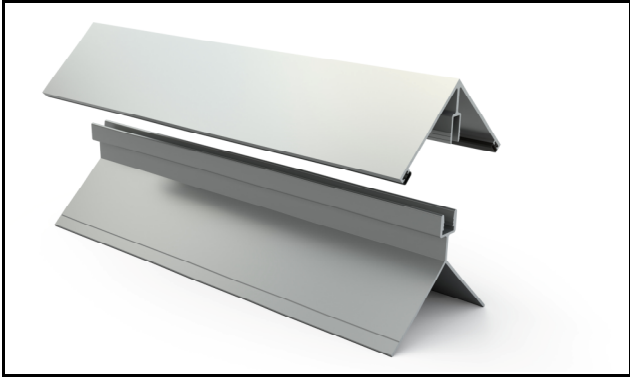
Quantity:

Small Starter J



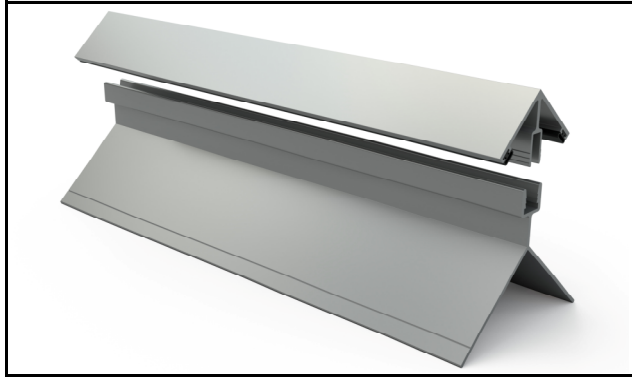
Quantity:

Large Outside Corner Extrusion



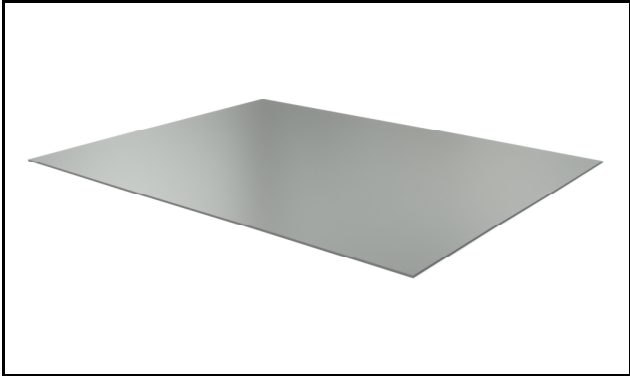
Quantity:

Small Outside Corner Extrusion



Quantity:

48" x 120" x .050" Flat Sheet - Painted One Side



Quantity:

Custom Trims and Flashings

**Please Provide profiles On EN-V Trim
Order Form**

Quantity:



12480 Superior Ct., Suite #1
 Holland, MI 49424
 616-355-2970
<https://en-v.com>

Date:	
-------	--

Customer Information

Company:
Street Address:
City:
State:
Zip Code:
Contact:
e-mail address:
Phone #:

Shipping Information

If ship to address is the same as customer contact, please leave blank

Company:
Street Address:
City:
State:
Zip Code:
Contact:
e-mail address:
Phone #:

Special Shipping Instructions

EN-V will ship either by LTL freight or dedicated box truck.
 After-hour deliveries, weekends, holidays, lift gates, or any special deliveries will be charged extra.

Authorization

Before an order can be placed into production, Dri-Design requires that the EN-V order form be filled out in its entirety. We require that the signed proposal and terms of sale correspond with the quantities and sizes listed on the EN-V order form and that the purchase order matches the correct dollar amount.

P.O.

Job Name

Name (Authorized Representation)

Date

Title