



12480 Superior Ct., Suite #1
 Holland, MI 49424
 616-355-2970
<https://en-v.com>

Date:

EN-V - A80 Series Price Request

Customer Information		Project Information	
Company:		Project Name :	
Street Address:		City:	
City:		State:	
State:		Zip Code:	
Zip Code:			
Contact:			
email address:			
Phone #:			

Color Choices

Standard 2-Coat Paint	Standard 2-Coat Mica Paint
3-Coat Custom	

Panel Size / Quantity

	Quantity	Size			Quantity	Size	
		W	H			W	H
		18"	48"			48"	22"
		24"	48"			60"	22"
		30"	30"			72"	22"
		36"	36"			96"	22"
		72"	18"			120"	22"
		96"	18"			48"	24"
		120"	18"			60"	24"
		60"	20"			72"	24"
		72"	20"			96"	24"
		96"	20"			120"	24"
		120"	20"				
NOTE: All dimensions for flat panels are centerline to centerline							
EN-V panels have a 1/2" horizontal joint and a 5/8" vertical joint							

Corner Panel Size / Quantity

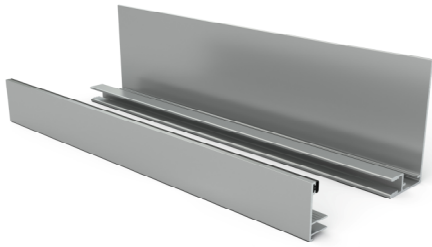
	Quantity	Size 1*	Size 2**		Quantity	Size 1*	Size 2**	

* Custom outside corner panel size #1 cannot exceed a total overall dimension of 60" x 24" or 24" x 48" with a minimum leg of 4"
 ** Custom outside corner panels size #2 cannot exceed a total overall dimension of 84" x 24" with a minimum leg of 4" and only one leg of the corner panel can exceed 24"

Date:

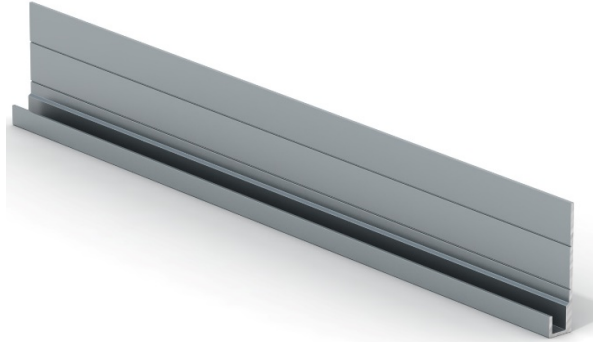
Extrusion / Trims / Flat Sheets & Accessories

Large 2-Piece J Extrusion



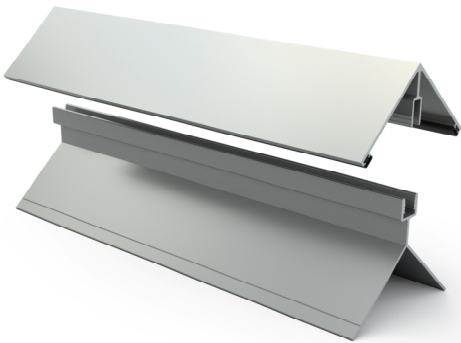
Quantity:

Small Starter J



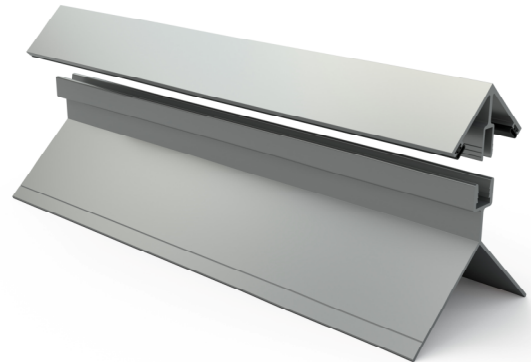
Quantity:

Large Outside Corner Extrusion



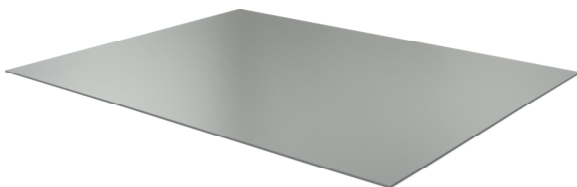
Quantity:

Small Outside Corner Extrusion



Quantity:

48" x 120" x .050" Flat Sheet - Painted One Side



Quantity:

Custom Trims and Flashings

**Please Provide profiles On EN-V Trim
Order Form**

Quantity: