



12480 Superior Ct., Suite #1
 Holland, MI 49424
 616-355-2970
<https://en-v.com>

Date:

EN-V - Z Series Price Request

Customer Information		Project Information	
Company:		Project Name :	
Street Address:		City:	
City:		State:	
State:		Zip Code:	
Zip Code:			
Contact:			
email address:			
Phone #:			

Color Choices

Quartz Zinc (Gray Aspect)	Anthra Zinc (Black Aspect)
----------------------------------	-----------------------------------

* 1.0mm Material Thickness

* 1.0mm Material Thickness

Panel Size / Quantity



Quantity	Size		
	W	H	
	48"	16"	<i>Quartz</i>
	60"	16"	<i>Quartz</i>
	72"	16"	<i>Quartz</i>
	48"	24"	<i>Quartz</i>
	60"	24"	<i>Quartz</i>
	72"	24"	<i>Quartz</i>
	48"	24"	<i>Anthra</i>
	60"	24"	<i>Anthra</i>
	72"	24"	<i>Anthra</i>

NOTE: All dimensions for flat panels are centerline to centerline

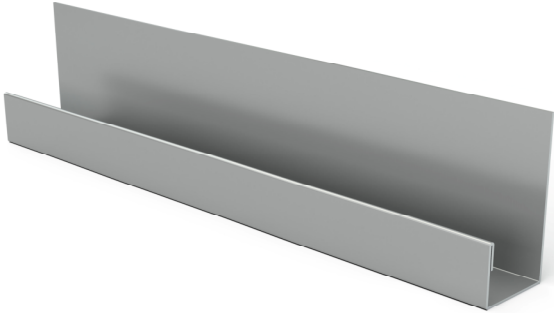
EN-V panels have a 1/2" horizontal joint and a 5/8" vertical joint

**** See Next Sheet for Trims and Flat Sheets ****

Date:

Trims / Flat Sheets & Accessories

Large J Channel Trim (1.0mm)



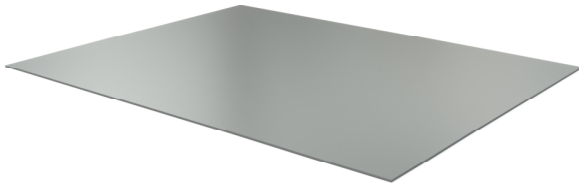
Quantity:

Corner Trim (1.0mm)



Quantity:

39.4" x 120" x 1.0mm Flat Sheet



Quantity:

**Please Provide profiles On EN-V Trim
Order Form**

Quantity: